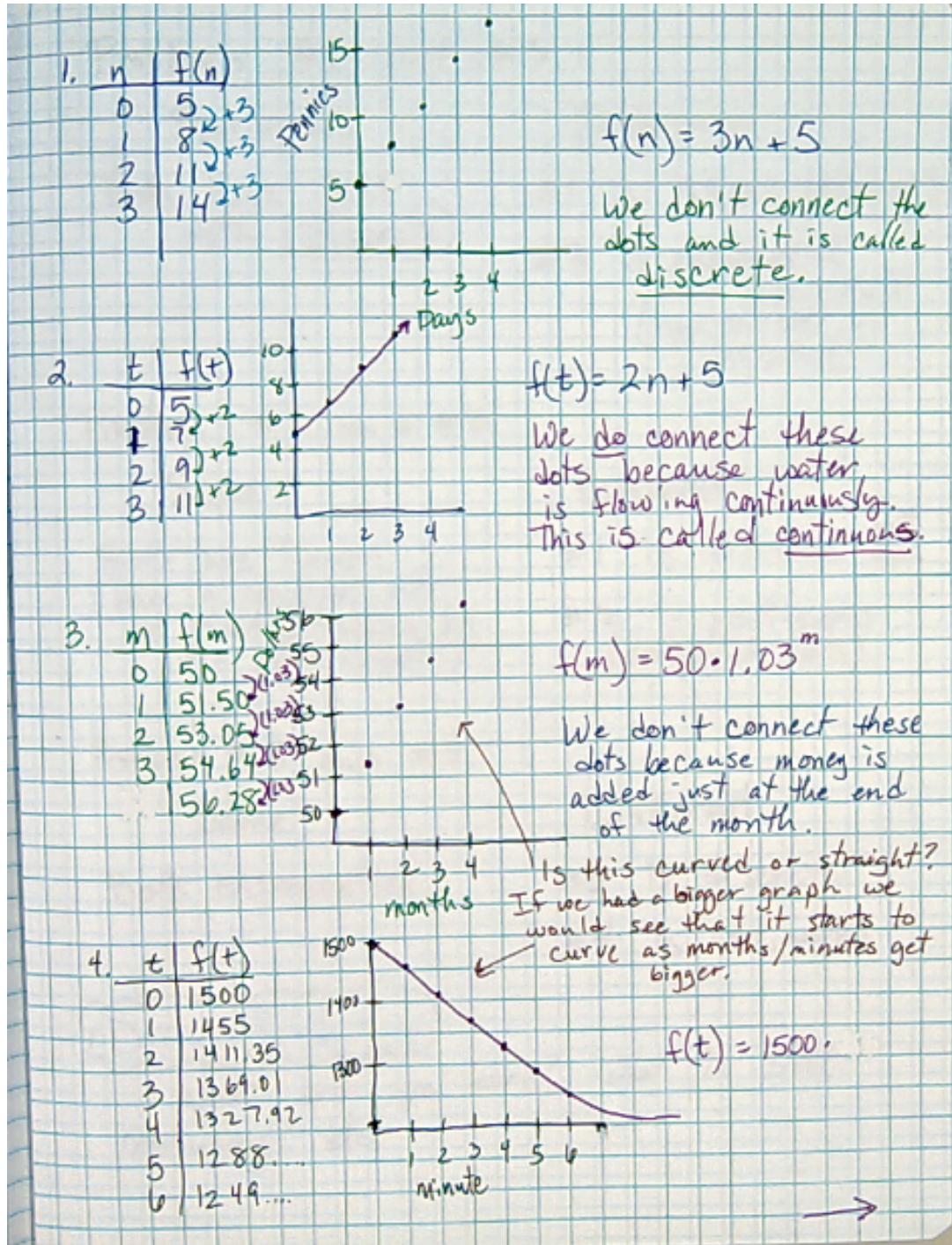
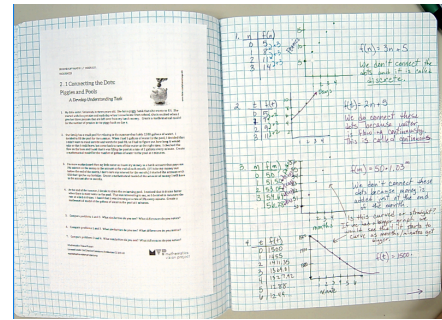


## 2.1 Piggies and Pools

Layout: Leave room for the glue-in on the left side of the notebook (get the glue-in from Mrs. Izatt). Your notes should look like this.





## Problems #1 and #3

### Similarities

Both have just dots. (Discrete)

### Differences

#1 is linear (straight)

#3 is exponential  
(curved)  
(has variable as exponent)

## Problems #1 and #2

### Same

Both are linear.  
(Have a constant rate of change - adding by the same amount.)

### Different

#1 is discrete - <sup>just</sup> dots

#2 is continuous  
(connected dots)

## Problems #3 and #4

### Same

Both exponential.

### Different

#3 is discrete

#4 is continuous.

## Daily Reflection:

What did you learn? What is still confusing? etc.